



Multiple Application Platform Server

MAPS 6.9 Release Guide

Product version 6.9
Last updated 7/7/2022

Trademark, Publishing Statement, and Copyright Notice

© 1998-2022 Evisions. All rights reserved.

This software and related documentation are provided under a license agreement containing restrictions on use and disclosure and are protected by intellectual property laws. No part of this document may be reproduced, stored in or introduced into a retrieval system, or transmitted in any form or by any means (electronic, mechanical, photocopying, recording, or otherwise), or for any purpose, without the express written permission of Evisions.

The information contained herein is subject to change without notice and is not warranted to be error-free. Product features referenced herein for a period of time may not match product contents. Evisions does not warrant that the functions contained in the software will meet your requirements or that the operation of the software will be uninterrupted or error free. Evisions reserves the right to make changes and/or improvements in the software without notice at any time.

This software and documentation may provide access to or information on content, products, and services from third parties. Evisions and its affiliates are not responsible for and expressly disclaim all warranties of any kind with respect to third-party content, products, and services. Evisions and its affiliates will not be responsible for any loss, costs, or damages incurred due to your access to or use of third-party content, products, or services. Evisions does not endorse the content or developer of any products or web sites mentioned.

All information in this guide is designed for instructional purposes only. Evisions makes no guarantees regarding the accuracy or performance of any techniques used in this guide. Software configurations and environments may vary, and some techniques used in this guide may not operate efficiently under all configurations. This guide may contain examples of various technologies or products, which are the sole property and responsibility of their creators.

Trademarks are the property of the respective owners for any products mentioned herein.

Table of Contents

What's New in MAPS 6.9?	4
MAPS Updates	4
Product versions	4
Installation	4
1. Prepare test environment and ensure current backup	4
2. Check for updates	4
3. Allow update process to complete	5
4. Verify the latest version is installed	5
MAPS 6.9 Release Notes	6
Getting Help	7
Can't find what you're looking for?	7

What's New in MAPS 6.9?

Evisions is pleased to announce the release of MAPS version 6.9, which includes the following changes:

MAPS Enhancements:

- Improvements to the Evisions DORIS Connector endpoints, allowing for larger amounts of data to be displayed in Argos.
- Provided access to alternate Evisions DORIS environments.
- Process improvements for authenticating to Evisions DORIS using tokens.
- Added support for IPv6.
- Additional enhancements.

MAPS Resolved Issues:

- Printing from simultaneously running schedules would cause MAPS to crash.
- Additional resolved issues.

We appreciate the feedback received from all of our users. Our products would not be what they are today without your continued support. If you have any comments or suggestions, please do not hesitate to [open a case with the HelpDesk](#) and let us know.

MAPS Updates

MAPS 6.9 is an update to the MAPS service (which includes the eLauncher) and the MAPS Config. You should upgrade both components concurrently.

[Product versions](#)

The latest versions of MAPS included in this release are:

- MAPS service 6.9.0.2592 / MAPS Config 6.9.0.1429 / eLauncher 6.9.0.26

Installation

[1. Prepare test environment and ensure current backup](#)

We highly recommend installing updates in a test environment before applying them to your production environment. You should make sure that a current backup is available in case of any unforeseen issues. To create a full backup of your MAPS environment, go to the **Server -> Backups** screen in MAPS and click **Backup Now**.

[2. Check for updates](#)

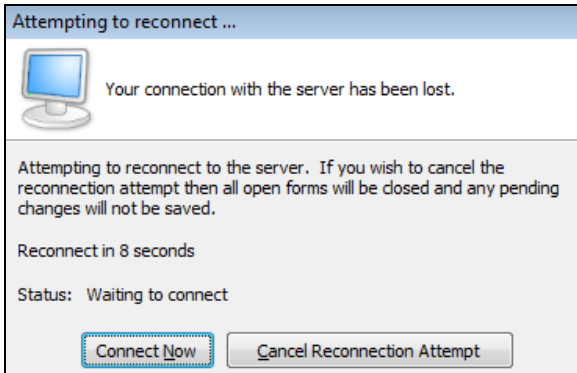
Click the **Check for Updates** button in the MAPS Configuration tool to view available updates.

If you need to apply earlier updates prior to the 6.9 update, please refer to the appropriate [release guide\(s\)](#) before proceeding.

It is possible to apply updates when users are on the system; however, to avoid the possibility of losing unsaved work we recommend applying updates during off hours.

[3. Allow update process to complete](#)

When applying updates to the MAPS service you will be temporarily disconnected from the server:



The update process may take a few minutes to complete. **Do NOT cancel the reconnection attempt or manually restart the server.** You will automatically be reconnected to the server once the update has been applied.

[4. Verify the latest version is installed](#)

To ensure that you are on the most current version, continue clicking the **Check for Updates** button and applying the updates until no new updates are available.

Please Provide Us with Your Feedback!

As always, we welcome any [feedback or suggestions](#) you may have. We very much appreciate your thoughts and suggestions, so please keep the great ideas coming!

MAPS 6.9 Release Notes

MAPS Service 6.9.0.2592 / MAPS Config 6.9.0.1429 / eLauncher 6.9.0.26

MAPS

Enhancements

Area	Description	Issue number
Configuration	Added a new maximum value of 5 hours, or 18,000 seconds, to the Client Read Timeout registry.	MAPS-1309
Configuration	Renamed all references of "MAP Server" to "MAPS".	MAPS-1127
Configuration	Added the Custom Image Alt Text field to the Launch Page section of MAPS Config.	MAPS-1412
Database	Database migration has been removed from MAPS Config.	MAPS-3226
Data Connections	MAPS now stores the refresh_token_expires_in property when authenticating an Evisions DORIS connection.	MAPS-3264
eLauncher	The eLauncher favicon has been changed to a local server resource in order to reduce certificate issues within browsers.	MAPS-3162
PostgreSQL	Upgraded .dll files in order to support newer versions of PostgreSQL for clustered environments.	MAPS-3306
Server	The default CDN URL has been updated to reflect an accurate hostname.	MAPS-3265
Support	Added additional support for IPv6 for improved network availability.	MAPS-2156
Usability	Renamed "Connection Pool" to "Connection Group".	MAPS-1068

Resolved Issues

Area	Description	Issue Number
Scheduling	Running simultaneous schedules that were attempting to print would sometimes cause MAPS to crash.	MAPS-3242
XQP	XQPs were unintentionally staying open after their parent process had closed.	MAPS-3274
XQP	Dashboards being opened without any SQL execution in the Web Viewer were causing the XQP to remain open and reused throughout the session.	MAPS-3258

Getting Help

For information on using the software, please refer to the product Help, which contains detailed information on all aspects of the product.

If you are having problems with the installation or configuration, you can search our [support site](#), which includes a knowledge base of common issues. If you are unable to find the solution, submit a HelpDesk request with a detailed explanation of the problem you are experiencing.

Please do not hesitate to contact the Evisions HelpDesk if any questions or problems arise. We are here to help you and want to ensure your success.

Can't find what you're looking for?

We would love to make our documentation better! If you have a moment to let us know what we missed or how we can make the help more useful, please email us at TechDocs@evisions.com.